

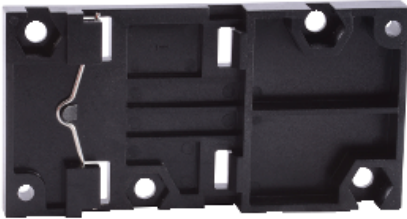
Product data sheet

Characteristics

9999DMB1

Contacteur, Definite Purpose, DIN rail mounting bracket, for 20A to 60A contactors

Product availability : Stock - Normally stocked in distribution facility



Main

Product Range	DPA
Component type	DIN rail adaptor
Used with	contactor

Ordering and shipping details

Category	21762 - 9999 DISCOUNT CP1B
Discount Schedule	CP1B
GTIN	00785901080848
Nbr. of units in pkg.	1
Package weight(Lbs)	1 lb(US) (0.45 kg)
Returnability	Yes
Country of origin	CN

Packing Units

Package 1 Height	2.70 in (6.858 cm)
Package 1 width	3.80 in (9.652 cm)
Package 1 Length	4.30 in (10.922 cm)

Offer Sustainability

REACH Regulation	REACH Declaration
EU RoHS Directive	Compliant EU RoHS Declaration
Toxic heavy metal free	Yes
Mercury free	Yes

* Price is "List Price" and may be subject to a trade discount – check with your local distributor or retailer for actual price.

RoHS exemption information	Yes
China RoHS Regulation	China RoHS declaration Pro-active China RoHS declaration (out of China RoHS legal scope)

Contractual warranty

Warranty	18 months
----------	-----------
